

ODM Quality Report

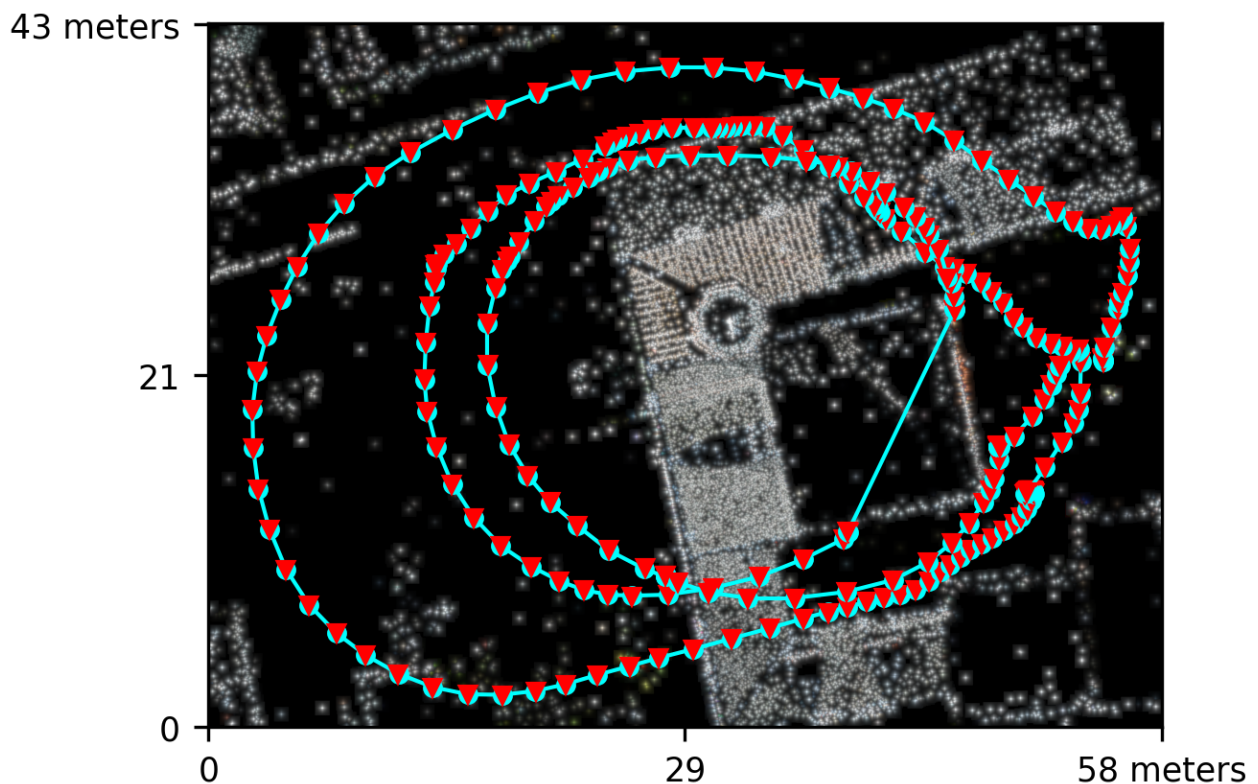
Processed with ODM version 3.1.9

Dataset Summary

Date	26/07/2023 at 15:46:41
Area Covered	0.002072 km ²
Processing Time	57.0m:8.0s
Capture Start	26/07/2023 at 16:06:48
Capture End	26/07/2023 at 16:11:51

Processing Summary

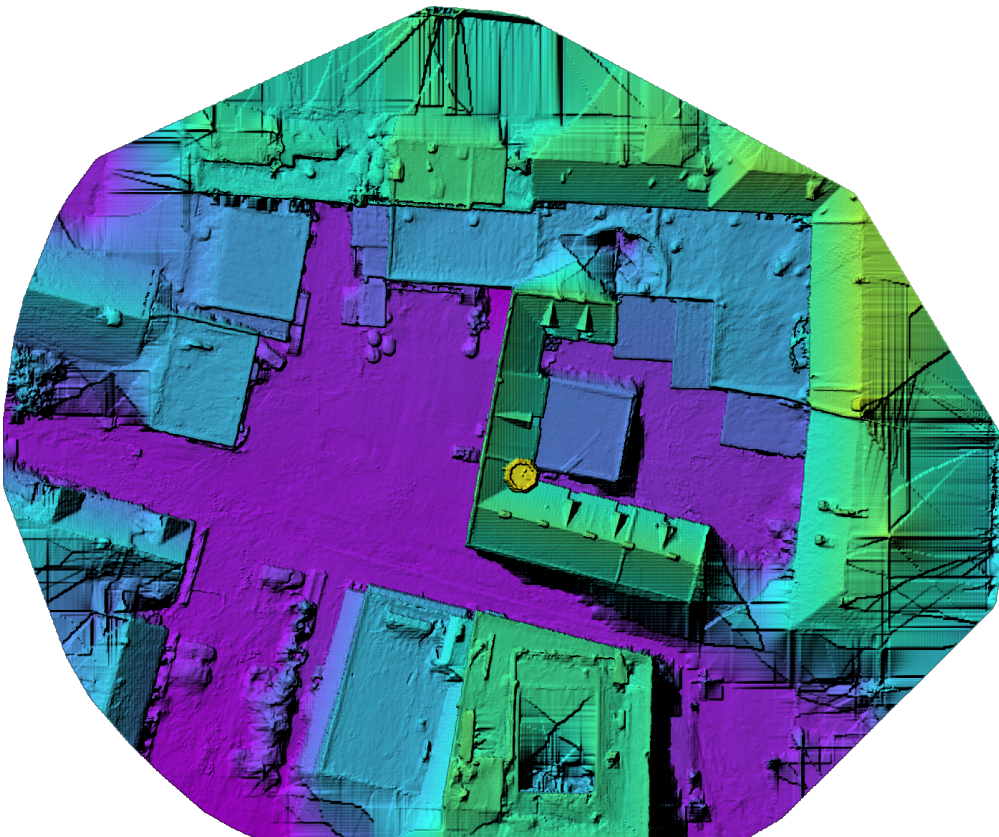
Reconstructed Images	262 over 262 shots (100.0%)
Reconstructed Points (Sparse)	368467 over 545018 points (67.6%)
Reconstructed Points (Dense)	25,906,553 points
Average Ground Sampling Distance (GSD)	0.4 cm
Detected Features	15,000 features
Reconstructed Features	7,603 features
Geographic Reference	GPS
GPS errors	0.02 meters



Previews



Orthophoto



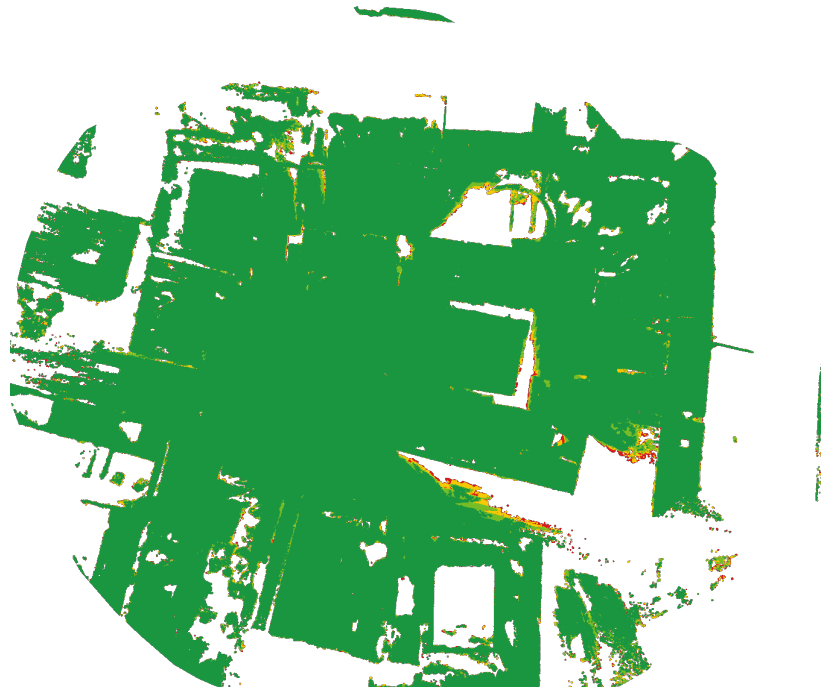
Digital Surface Model



38.46m

61.67m

Survey Data



■ 2 ■ 3 ■ 4 ■ 5+

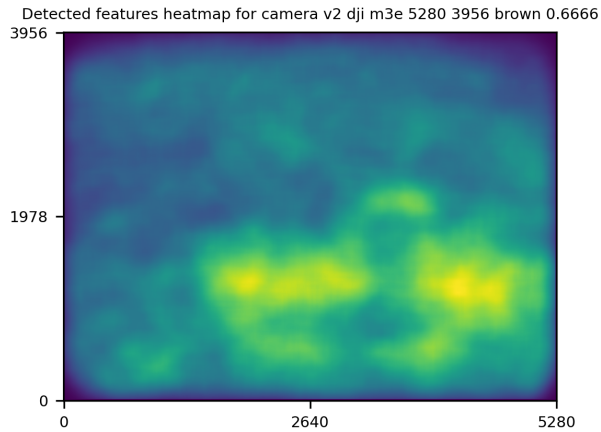
GPS/GCP/3D Errors Details

GPS	Mean	Standard Deviation	RMS Error
X Error (meters)	0.000	0.008	0.008
Y Error (meters)	0.000	0.015	0.015
Z Error (meters)	-0.000	0.015	0.015
Total			0.020

3D	Mean	Standard Deviation	RMS Error
X Error (meters)	0.209	1.091	1.111
Y Error (meters)	0.105	1.009	1.015
Z Error (meters)	0.043	0.177	0.183
Total			0.264

	Absolute	Relative
Horizontal Accuracy CE90 (meters)	0.030	0.373
Vertical Accuracy LE90 (meters)	0.023	0.087

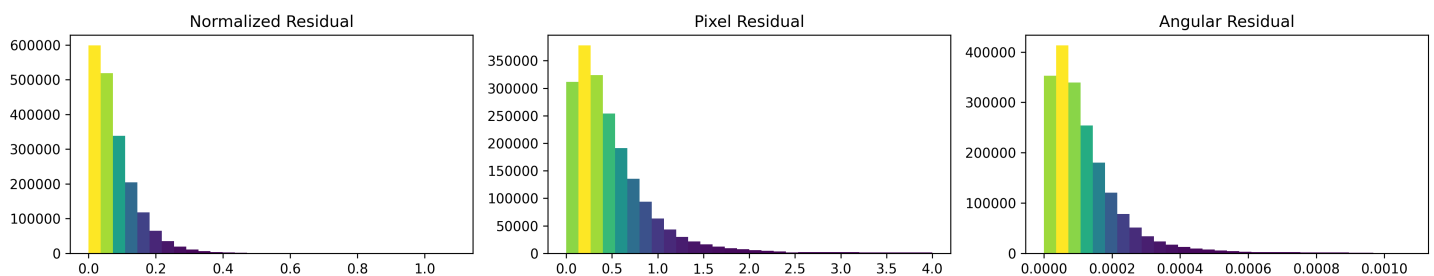
Features Details



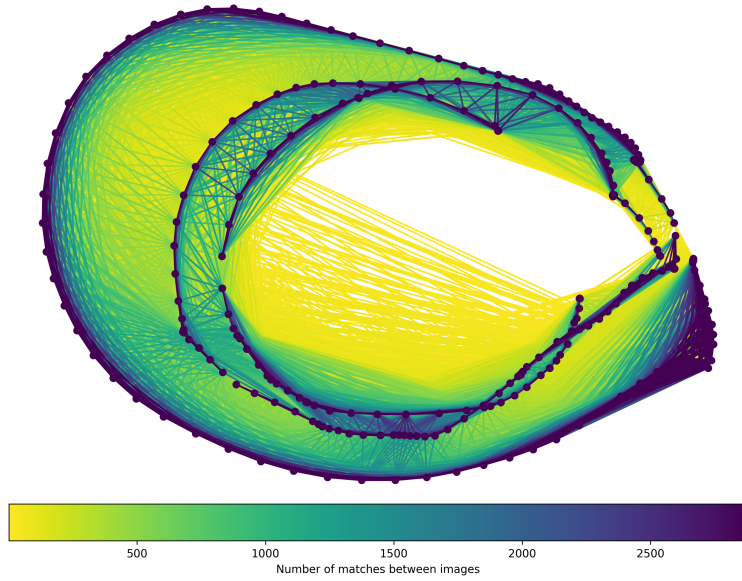
	Min.	Max.	Mean	Median
Detected	10348	15002	14633	15000
Reconstructed	2281	10898	7478	7603

Reconstruction Details

Average Reprojection Error (normalized / pixels / angular)	0.08 / 0.51 / 0.00012
Average Track Length	5.32 images
Average Track Length (> 2)	6.88 images



Tracks Details



Length	2	3	4	5	6	7	8	9	10
Count	117931	67170	45278	31737	22505	15892	12097	9207	7441

Camera Models Details

v2 dji m3e 5280 3956 brown 0.6666

	k1	k2	k3	p1	p2	focal	aspect_ratio	cx	cy
Initial	0.0000	0.0000	0.0000	0.0000	0.0000	0.6667	1.0000	0.0000	0.0000
Optimized	-0.1084	0.0074	-0.0228	-0.0001	-0.0001	0.7025	1.0000	0.0021	-0.0064

